

CERTIFICATE OF LOCATION OF GOVERNMENT CORNER

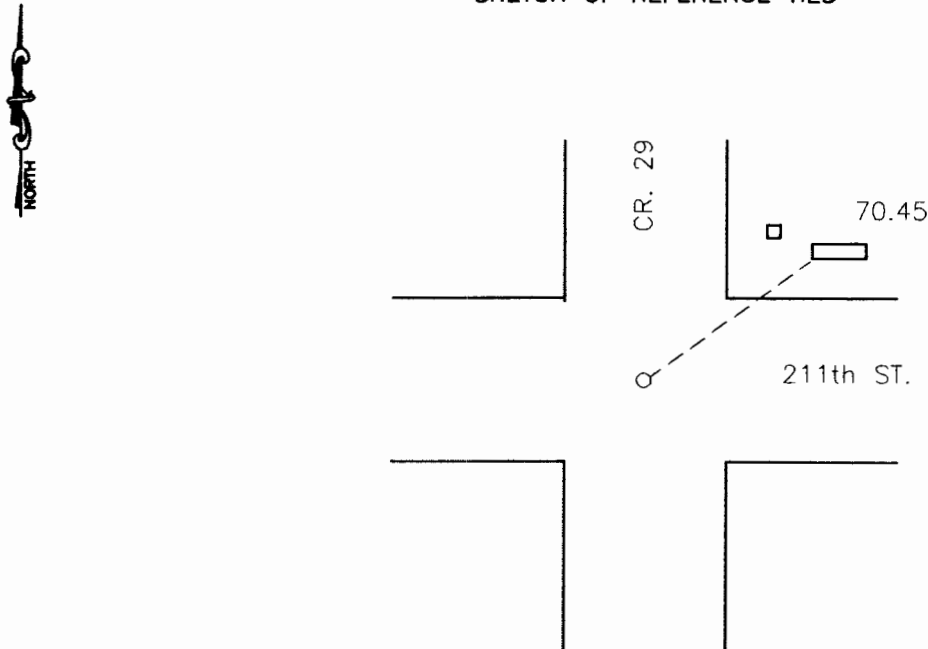
North East Corner of Section 21, Township 108, Range 42, 5th P.M.

STATE OF MINNESOTA, County of Murray

At the corner location shown on the sketch:

- On 3-10-2000 found a 1/2" iron 4" down, we raised it to the road surface
DATE
- left monument as found, lowered monument, removed monument (explain)
- On _____ placed a _____
DATE

SKETCH OF REFERENCE TIES



Southwest corner of power box 1.5x5.3 70.45' Northeast

Statement of evidence relative to this corner location is on back of page.

I hereby certify that this document and the data contained herein was prepared by me or under my direct supervision.

Lyle E. Moseng 12-29-00
SIGNATURE DATE

Registration No. 11943

- Land Surveyor, Professional Engineer
- County Surveyor, County Engineer

OFFICE OF THE COUNTY RECORDER

County of _____

I hereby certify that this document was filed in the Co. Recorders office at _____ M on the _____ day of JUL 24 2001 A.D. 19 _____

County Recorder James V. Johnson
 By _____, Deputy

DOCUMENT NO. _____

Statement of Evidence

On 3-10-2000, Moseng Land Surveying found a 1/2" iron 4" down, set by County Highway Department above a concrete monument. We raised to the road surface.